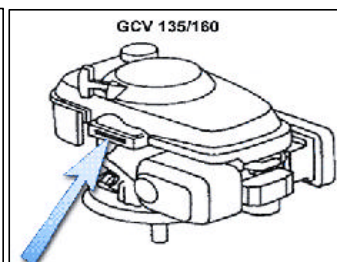
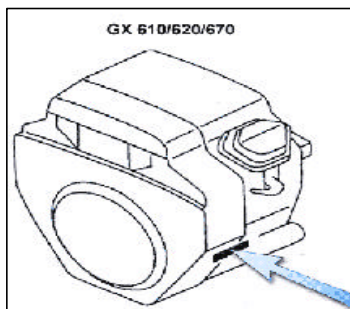
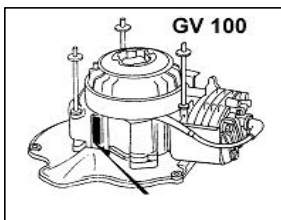
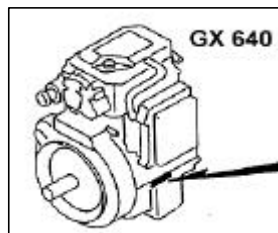
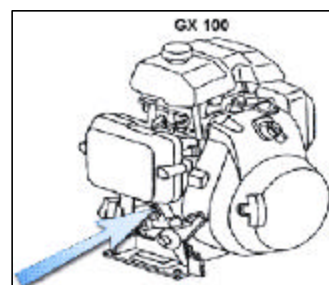
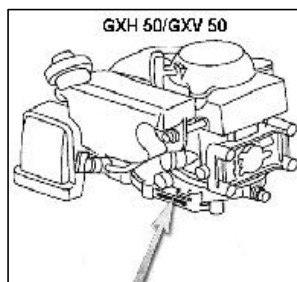
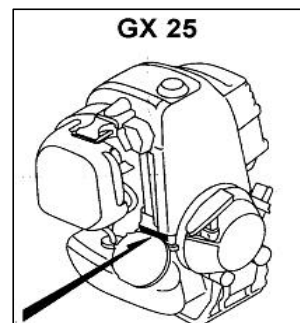
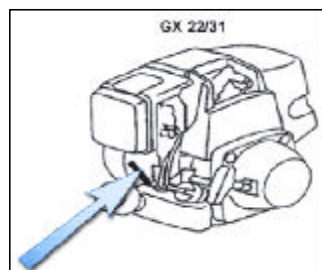
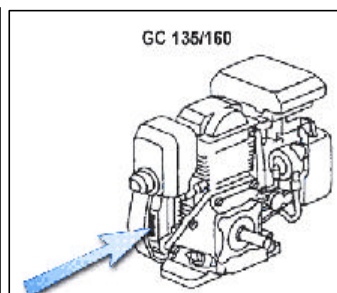
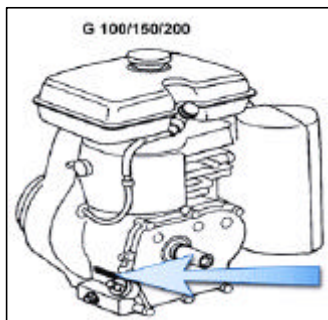
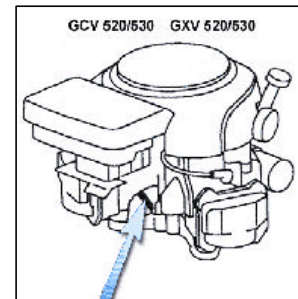
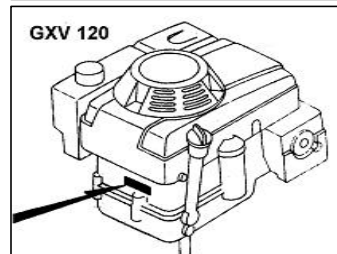
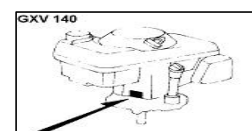
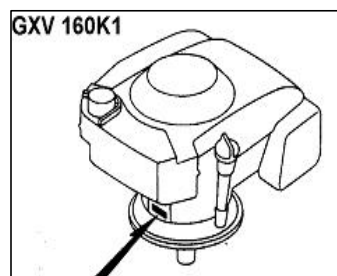
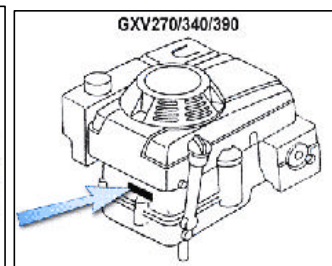
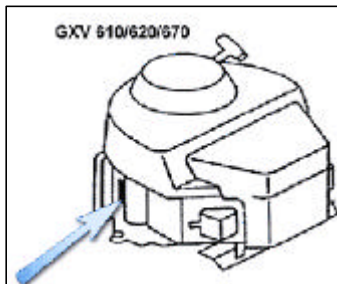


CATÁLOGO DE BUSCA RÁPIDA DE MOTORES HONDA

modelo motor	codigo modelo	n° serie motor	
		desde	hasta
G 100K1	G100-	2000001	2424874
G 100K2		3000001	9999999
G 150	G150-	1000001	9000000
G 150K1	G150-	9100001	9999999
G 200	G200-	1000001	9000000
G 200K1	G200-	9100001	9999999
GC 135	GCAJ-	1000001	9999999
GC 160	GCAH(A)-	1000001	9999999
GX 22	GCAF-	1000001	9999999
GX 31	GCAG-	1000001	9999999
GX 25	GCAAM-	1000001	9999999
GXH 50	GCAL-	1000001	9999999
GX 100	GCANM-	1000001	9999999
GX 120K1	GC01-	2000001	9999999
GX 160K1	GC02-	2000001	9999999
GX 200	GCAE-	1000001	9999999
GX 240K1	GC04-	3000001	9999999
GX 270	GCAB-	1000001	9999999
GX 340K1	GC05-	2000001	9999999
GX 390K1	GCAA-	2000001	9999999
GX 360K1	GA01-	1100001	9999999
GX 640	GAAD-	1000001	9999999
GX 610	GCAC-	1000001	1999999
GX 620	GCAD-	1000001	1999999
GX 610K1	GCAC-	2000001	9999999
GX 620K1	GCAD-	2000001	9999999
GX 670	GCAM-	1000001	9999999



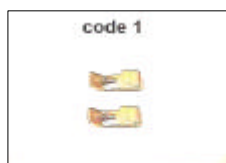
<i>modelo motor</i>	<i>código modelo</i>	<i>nº serie motor</i>	
		<i>desde</i>	<i>hasta</i>
GV 100K1	GV100-	2000001	2999999
GV 100K2		910001	9999999
GCV 135	GJAF-	1000001	9999999
GCV 135E	GJAFE-	1000001	9999999
GCV 160A	GJAEA-	1000001	9999999
GCV 160	GJAE-	1000001	9999999
GCV 520	GJAKM-/GJANM-	1000001	9999999
GCV 530		GJAJM-/GJAMM-	1000001
GXV 50	GJAG-	1000001	9999999
GXV 120	GXV120-	1000001	9999999
GXV 140	GJAB-	6000001	9999999
GXV160	GJ03-	1000001	5999999
GXV 160K1		6000001	9999999
GXV 270K1	GJ01-	2000001	9999999
GXV 340K1	GJ02-	1100001	5999999
GXV 340K2		6000001	9999999
GXV 390K1	GJAA-	6000001	9999999
GXV 520	GJAPM-	1000001	9999999
GXV 530	GJARM-	1000001	9999999
GXV 610	GJAC-	1000001	1999999
GXV 620	GJAD-	1000001	1999999
GXV 610K1	GJAC-	2000001	9999999
GXV 620K1	GJAD-	2000001	9999999
GXV 670	GJAH-	1000001	9999999



Importante: seguidamente del código de modelo podra encontrar los 7 dígitos del nº de serie. y el tipo.
e.g.: GCAJ-1093423-QHEP
corresponde a: modelo de motor GC 135, nº de serie. 1093423, tipo QHEP

<u>engine model</u>	<u>starter ratchet</u> code 1	<u>return spring</u> code 2	<u>reel</u> codigo 3	<u>reel diameter</u> in mm	<u>starter spring</u> codigo 4	<u>case comp.</u> codigo 5	<u>grip</u> codigo 6	<u>complete starter assy.</u> codigo 7
G 100K1	28422-896-010	28443-896-000	28420-ZG0-004	110	28442-ZE6-003	28410-ZG0-014ZB(rojo)	28461-ZH8-003	28400-ZG0-004ZB(rojo)
G 100K2						28410-ZG0-014ZB(rojo)/ZA(negro)		28400-ZG0-004ZB(rojo)/ZA(negro)
G 150	28422-883-020	-	28420-889-010	127	28442-883-000	28410-883-030H	28461-883-000	28400-883-040ZB
G 150K1	28422-883-T20	-	28421-883-T20	130	28442-883-T20	28410-883-T20ZA	28461-883-T20	28400-883-T20ZA
G 200	28422-883-020	-	28420-889-010	127	28442-883-000	28410-883-030ZB	28461-883-000	28400-883-040ZB
G 200K1	28422-883-T20	-	28421-883-T20	130	28442-883-T20	28410-883-T20ZA	28461-883-T20	28400-883-T20ZA
GC 135	-	-	-	-	-	-	-	-
GC 160	-	-	-	-	-	-	28461-ZL8-003	28400-ZL8-013ZA(negro)/ZB(rojo)
GX 22	-	-	28421-ZM3-003	60	28442-ZM3-003	28414-ZM3-003	28461-ZM3-003	28400-ZM3-003ZA
GX 31	-	-	-	-	-	-	-	-
GX 25	-	-	28421-Z0H-003	50	28442-Z0H-003	28414-Z0H-003	-	28400-Z0H-003
GXH 50	-	-	28421-ZM7-003	75	-	28414-ZM7-003	28461-ZM3-003	28400-ZM7-003
GX 100 STD	-	-	-	-	-	-	28461-Z0D-003	28400-Z0D-003ZB(negro)/ZA(rojo)
GX 100 TAMP	28422-ZG0-W02	-	28421-Z0D-V02	113	28442-ZH8-003	28410-Z0D-V02ZA	28461-ZH8-003	28400-Z0D-V02ZA
GX 120K1	-	-	-	-	-	-	-	-
GX 160K1	28422-ZH8-013	28443-ZH8-003	28420-ZH8-013	137	28442-ZH8-003	28410-ZH8-003ZA(rojo)/ZB(negro)	28461-ZH8-003	28400-ZH8-013ZA(rojo)/ZB(negro)
GX 200	-	-	-	-	-	-	-	-
GX 240K1	-	-	28421-ZE2-W01	150	28442-ZE2-W01	28410-ZE2-W01ZA(rojo)/ZB(negro)	28461-ZE2-W01	28400-ZE2-W01ZA(rojo)/ZB(negro)
GX 270	28422-ZE2-W01	28443-ZE2-W01	-	-	-	-	28461-ZE2-W02	28400-ZE2-W01ZA(rojo)/ZB(negro)
GX 340K1	-	-	28421-ZE3-W01	169	-	28410-ZE3-W01ZA(rojo)/ZB(negro)	28461-ZE2-W01	28400-ZE3-W01ZA(rojo)/ZB(negro)
GX 390K1	-	-	-	-	-	-	28461-ZE2-W02	-
GX 360K1	SIN ARRANQUE MANUAL, SOLO ARRANQUE ELECTRICO							
GX 640	-	-	-	-	-	-	-	-
GX 610	-	-	-	-	-	-	-	-
GX 620	28422-ZE2-W01	28443-ZE2-W01	28421-ZE3-W01	169	28442-ZE2-W01	28410-ZE3-W01ZA(rojo)/ZB(negro)	28461-ZE2-W01	28400-ZE3-W01ZA(rojo)/ZB(negro)
GX 610K1	-	-	-	-	-	28410-ZE3-W01ZB(negro)	-	28400-ZE3-W01ZB(negro)
GX 620K1	-	-	-	-	-	28410-ZE3-W01ZA(rojo)/ZB(negro)	28461-ZE2-W02	28400-ZE3-W01ZA(rojo)/ZB(negro)
GX 620K1	-	-	-	-	-	-	-	28400-ZE3-W01ZA(rojo)/ZB(negro)
GX 670	SIN ARRANQUE MANUAL, SOLO ARRANQUE ELECTRICO							
GV 100K1	28422-896-010	-	28420-ZG1-702	110	28442-ZE6-003	28410-ZG1-702ZA	28461-ZE7-T00	28400-ZG1-T12ZA(RED)/ZB(negro)
GV 100K2	28422-ZL1-003	-	28421-ZL1-003	110	28442-ZH8-003	-	-	28400-ZL1-003
GCV 135	-	-	-	-	-	-	-	28400-ZM0-632ZA(negro)
GCV 135E	-	-	-	-	-	-	28461-ZL8-003	28400-ZL8-013ZA(negro)/ZB(rojo)
GCV 160A	-	-	-	-	-	-	-	28400-ZM0-632ZA(negro)
GCV 160	-	-	-	-	-	-	-	-
GCV 520	SIN ARRANQUE MANUAL, SOLO ARRANQUE ELECTRICO							
GCV 530	-	-	-	-	-	-	-	-
GXV 50	-	-	28421-ZM7-003	75	-	28414-ZM7-003	28461-ZM3-003	28400-ZM7-003

<u>modelo motor</u>	<u>trinquete</u> codigo 1	<u>muelle retorno</u> codigo 2	<u>polea</u> codigo 3	<u>diametro polea</u>	<u>muelle arranque</u> codigo 4	<u>carcasa</u> codigo 5	<u>empuñadura</u> codigo 6	<u>conjunto arranque</u> codigo 7
GXV 120	28422-896-010	28443-896-000	28420-ZE6-003	124	28442-ZE6-003	28410-ZE6-003ZA(rojo)/ZB(negro)	28461-ZE1-003	28400-ZE6-003ZA(rojo)/ZB(negro)
GXV 140	28485-ZE6-T02	28486-ZE6-T02	-	-	-	28402-ZG9-802	28461-ZE6-T02	28400-ZG9-803
GXV160	28422-896-010	28443-896-000	28420-ZE7-003	120	28442-896-700	28410-ZE7-003ZA	28461-ZE1-003	28400-ZE7-003ZA
GXV 160K1	28485-ZE6-T02	28486-ZE6-T02	-	-	-	28402-ZG9-802	28461-ZE7-T00	28400-ZG9-N10
GXV 270K1	-	-	28421-ZE3-W01	169	-	28410-ZE8-004ZB(rojo)/ZA(negro)	28461-ZE2-W01	28400-ZE8-004ZB(rojo)/ZA(negro)
GXV 340K1	28422-ZE2-W01	28443-ZE2-W01	-	-	28442-ZE2-W01	28410-ZE8-004ZB(rojo)	-	28400-ZE8-004ZB(rojo)
GXV 340K2	-	-	28421-ZE8-821	165	-	28410-ZE3-W01ZA(rojo)/ZB(negro)	28461-ZE2-W02	28400-ZE3-W01ZA(rojo)/ZB(negro)
GXV 390K1	-	-	28421-ZE3-W01	169	-	28410-ZE3-W01ZA(rojo)	-	28400-ZE3-W01ZA(rojo)
GXV 520	SIN ARRANQUE MANUAL, SOLO ARRANQUE ELECTRICO							
GXV 530	-	-	-	-	-	-	-	-
GXV 610	-	-	-	-	-	-	-	-
GXV 620	28422-ZE2-W01	28443-ZE2-W01	28421-ZE3-W01	169	28442-ZE2-W01	28410-ZE3-W01ZA(rojo)/ZB(negro)	28461-ZE2-W02	28400-ZE3-W01ZA(rojo)/ZB(negro)
GXV 610K1	-	-	-	-	-	28410-ZE3-W01ZA(rojo)	-	28400-ZE3-W01ZA(rojo)
GXV 620K1	-	-	-	-	-	28410-ZE3-W01ZA(rojo)/ZB(negro)	-	28400-ZE3-W01ZA(rojo)/ZB(negro)
GXV 670	SIN ARRANQUE MANUAL, SOLO ARRANQUE ELECTRICO							



tapón depósito codigo**aplicable a**

17620-ZH7-023	1bis	G100K1, G100K2, G150K1, G200K1, GX120K1, GX160K1, GX200, GX240K1, GX270, GX340K1, GX390K1, GX610
17620-883-T70	1bis	G150, G200
17620-Z0T-811	1a	GX120T1, GX160T1, GX200T
17620-ZM3-043	1	GX22, GX31, GX25
17620-ZL8-013	1	GXH50
17620-899-013	1	GX620
17620-ZJ1-840	1	GX620K1
17620-ZG1-000	1	GV100K1
17620-ZG9-000	1	GV100K2, GXV140
17620-ZV0-020	1	GXV50
17620-ZE7-000	1	GXV120, GXV160, GXV160K1, GXV270K1, GXV340K1, GXV340K2, GXV390K1
17620-ZL8-013	1	GC135, GC160, GX100, GCV135, GCV160

filtro gasolina**aplicable a****Ø en mm**

17672-880-000	2	G100K1, G150, G200	34.5*
17672-ZM3-003	3	GX22, GX31, GX25	16
17672-899-000	2	GX620, GX620K1	52*
17672-ZE2-W01	2	GXV270K1, GXV340K2, GX120K1, GX160K1, GX200, GX240K1, GX270, GX340K1, GX390K1, G100K2, G150K1, G200K1	32*

grifo gasolina**aplicable a**

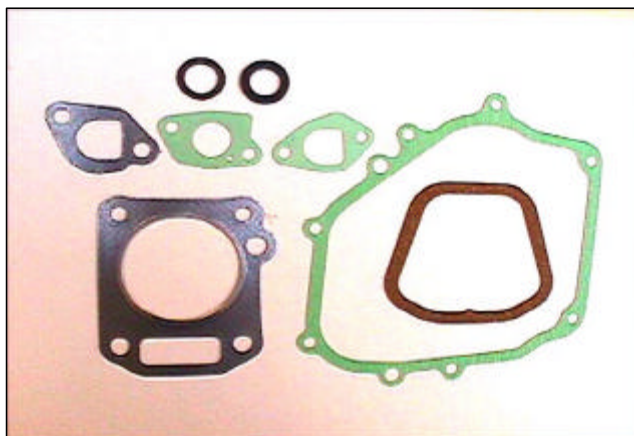
16950-898-633	4	GX160K1, GX200
16950-ZA0-013	4	GX620
16950-YA0-802	4	GX610, GX620K1
16950-ZL1-000	5	GV100K2
16950-ZG9-M03	5	GCV135, GCV160, GXV140, GXV50
16950-883-663	4	G150, G200
16950-883-T03	4	G150K1, G200K1

*** = DIAMETRO DEL FILTRO DENTRO DEL DEPÓSITO**

code 1bis**code 1a****code 1****code 2****code 3****code 4****code 5**

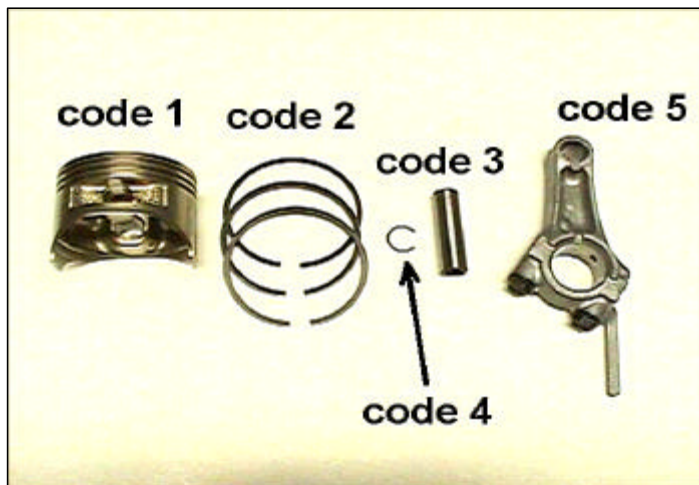
<u>modelo motor</u>	<u>kit juntas</u>	<u>junta culata</u>	<u>junta tapa carter</u>	<u>junta tapa culata</u>	<u>junta pipeta escape</u>
GV100K2	-	12281 ZC0 003	11381 ZL1 000	12375 ZG1 000	
GXV120	06111-ZE6-406	12251-ZE6-000	11381-ZG9-J60	12391-ZE7-M10	18381-ZE6-800
GXV140	06111-ZG9-406	12251-ZG9-000	11381-ZG9-T00	12391-ZE7-T00	
GXV160	06111-ZE7-406	12251-ZE7-000	11381 ZE7 M10	12391-ZE7-M10	18381-ZG9-M00
GXV160K1	061A1-ZE7-T00			12391-ZE7-T00	
GXV270K1	061A1-ZE8-U60	12251-ZE8-020	11381-ZE9-800	12391-ZE8-000	18333-ZE3-800
GXV340K1	-	12251-ZE9-600			
GXV340K2	06111-ZE9-V01				
GXV390K1	-	12251-ZF5-000			
G100K1	06111-ZG0-405	12281-ZG0-003	11381 ZG0 800	12375 ZG0 010	18381 ZG0 800
G100K2	06111-ZG0-406	12281-ZC0-003			
G150	061A1-887-S01	12281-887-306	11381 883 800	12375 887 000	18381 883 800
G150K1	-				
G200	061A1-883-S01	12281-883-801		12375 883 000	
G200K1	-				
GX120K1	06111-ZH7-405	12251-ZH7-800	11381-ZH7-800	12391 ZE1 000	18382 ZH8 800
GX160K1	06111-ZH8-405	12251-ZF1-800	11381-ZH8-801		
GX200	06111-ZL0-000	12251-ZL0-003	11381-ZL0-000		
GX240K1	06111-ZE2-408	12251-ZE2-800	11381-ZE2-801	12391 ZE2 020	18382 ZE2 800
GX270	06111-ZH9-050	12251-ZH9-000			
GX340K1	06112-ZE3-405	12251-ZE3-W00	11381-ZE3-801		
GX390K1	06111-ZF6-R81	12251-ZF6-W00			
GX610 / 620	061A1-ZJ1-000	12251-ZJ1-003	11381-ZJ1-000	12391-ZJ1-000	18333-ZJ1-000
GX610 / 620 K1	061A1-ZJ1-001	12251-ZJ1-841	11381-ZJ1-840	12391-ZE2-020	18333 ZE3 800

importante : los retenes del cigueñal y volante no estan incluidos en el kit

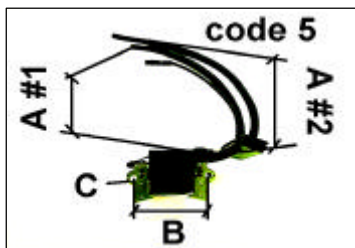
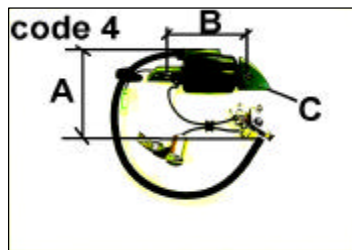
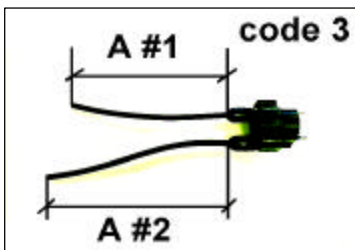
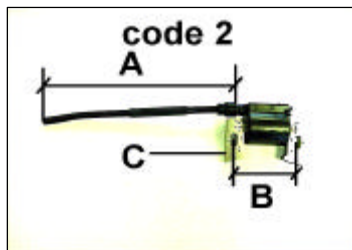
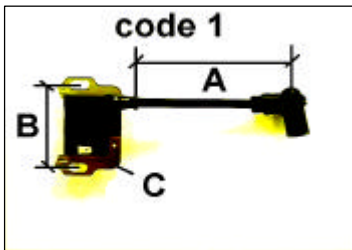


<u>modelo motor</u>	<u>piston</u> <u>codigo 1</u>	<u>diámetro cilindro</u> <u>in mm</u>	<u>conjunto aros</u> <u>codigo 2</u>	<u>bulón piston</u> <u>codigo 3</u>	<u>clip piston</u> <u>codigo 4</u>	<u>biela estándar</u> <u>codigo 5</u>	<u>biela b/m (-025)</u>
G 100K1	13101-ZG0-003*	48	13010-ZG0-003*	13111-892-000	13115-147-000	13200-ZG0-000	13200-ZG0-305
G 100K2	13101-ZC0-003*		13010-ZC0-003*				
G 150	13101-887-003*	64	13010-887-000*	13111-883-000	90551-883-000	13200-887-010	13200-887-315
G 150K1						13200-887-050	-
G 200	13101-883-003*	67	13010-883-003*			13200-883-040	13200-883-345
G 200K1							
GC 135	13101-ZL8-000	64	13010-ZL8-003	13111-ZE0-000	90551-ZE0-000	13200-ZL9-000	-
GC 160						13200-ZL8-000	-
GX 22	13101-ZM3-020	33	13010-ZM3-000	13111-ZM3-000	-	-	-
GX 31	13101-ZM5-020	39	13010-ZM5-000	13111-ZM5-000			
GX 25	13101-Z0H-000	35	13010-Z0H-000	13111-Z0H-000			
GXH 50	13101-ZM7-000	41,8	13010-ZM7-000	13111-122-000	13115-147-000	13200-ZM7-000	-
GX 100 STD	13101-Z0D-000	56	13010-Z0D-003	13111-ZE0-000	90551-ZE0-000	13200-Z0D-000	13200-Z0D-305
GX 100 TAMP							
GX 120K1	13101-ZH7-000*	60	13010-ZK7-V01*	13111-ZE0-000	90551-ZE0-000	13200-ZE0-000	-
GX 160K1	13101-ZH8-010*	68	13010-ZH8-941*	13111-ZE1-000	90551-ZE1-000	13200-ZE1-010	-
GX 200	13101-ZL0-000*	68	13010-ZL0-003*	13111-ZE1-000	90551-ZE1-000	13200-ZE1-010	132A0-ZE1-000
GX 240K1	13101-ZE2-W00*	73	13010-ZE2-013*	13111-ZE2-000	90551-ZE1-000	13200-ZE2-010	13200-ZE2-305
GX 270	13101-ZH9-000*	77	13010-ZE8-601*			13200-ZE2-000	
GX 340K1	13101-ZE3-W00*	82	13010-ZE3-003*	13111-ZF6-000	90601-ZE3-000	13200-ZE3-010	13200-ZE3-315
GX 390K1	13101-ZF6-W00*	88	13010-ZF6-003*	13111-ZF6-W00		13200-ZE3-020	
GX 360K1	13101-ZA0-000*	58	130A1-ZA0-004*	13111-881-000	94601-14000	13210-ZA0-000	-
GX 640	13101-ZG8-000*	76	13010-ZG8-004*	13111-ZG8-000	94601-19000	13210-ZG8-000	-
GX 610	13101-ZJ1-000*	77	13010-ZE8-601*	13111-ZJ1-000	90551-ZE1-000	13210-ZJ1-000	-
GX 620							
GX 610K1	13101-ZJ1-840*		13010-ZJ1-841*	13111-ZJ1-840	94601-18000	13200-ZJ1-841	-
GX 620K1							
GX 670	13101-ZN1-000*					13200-ZN1-003	
GV 100K1	13101-ZC0-003	52	13010-ZG1-U11	13111-892-000	13115-147-000	13200-ZG0-000	-
GV 100K2							
GCV 135	13101-ZL8-000	64	13010-ZL8-003	13111-ZE0-000	90551-ZE0-000	13200-ZL8-000	-
GCV 135E							
GCV 160A							
GCV 160							
GCV 520	13101-Z0A-000	77	13010-Z0A-014	13111-ZJ1-840	90551-ZE1-000	13200-Z0A-003	-
GCV 530	13101-Z0A-800		13010-ZJ1-841		90551-ZE1-000	13200-Z0A-003	
GXV 50	13101-ZM7-000	41,8	13010-ZM7-000	13111-122-000	13115-147-000	13200-ZN4-000	-
GXV 120	13101-ZE6-003*	60	13010-ZE6-003*	13111-ZJ1-840	90551-ZE1-000	13200-Z0A-003	-
GXV 140	13101-ZG9-000*	64	13010-ZG9-003*	13111-ZE0-000	90551-ZE0-000	13200-ZE6-010	
GXV160	13101-ZE7-000*	68	13010-ZF1-014*	13111-ZE1-000	90551-ZE1-000	13200-ZE7-000	13200-ZE7-305
GXV 160K1	13101-ZE7-010*		13010-ZF1-023*				-
GXV 270K1	13101-ZE8-010*	77	13010-ZE8-601*	13111-ZE2-000	90551-ZE1-000	13200-ZE8-000	13200-ZE8-305
GXV 340K1	13101-ZE3-000*	82	13010-ZE3-003*	13111-ZE3-000	90601-ZE3-000	13200-ZE9-010	13200-ZE9-315
GXV 340K2	13101-ZE3-W00*						
GXV 390K1	13101-ZF6-W00*	88	13010-ZF6-003*	13111-ZF6-000			
GXV 520	13101-Z0A-000	77	13010-Z0A-003	13111-ZJ1-840	90551-ZE1-000	13200-Z0A-801	-
GXV 530							
GXV 610	13101-ZJ1-000*	77	13010-ZE8-601*	13111-ZJ1-000	90551-ZE1-000	13210-ZJ1-000	-
GXV 620							
GXV 610K1	13101-ZJ1-840*		13010-ZJ1-841*	13111-ZJ1-840	94601-18000	13200-ZJ1-841	-
GXV 620K1							
GXV 670	13101-ZN1-000*		13010-ZJ1-841*	13111-ZJ1-840		13200-ZN1-003	

* = existen conjuntos de segmentos sobremedida

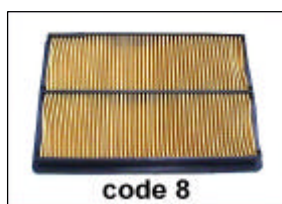
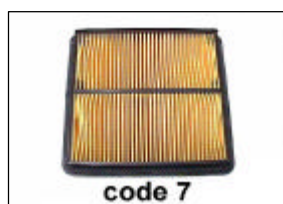
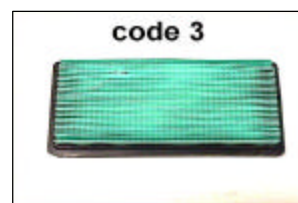
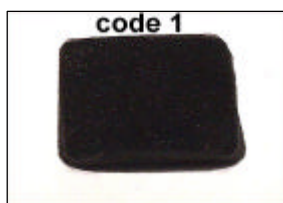


modelo motor	bobina encendido	codigo	dist. Centro	bobina	cable
			bobina	grosor	largo
			en mm	en mm	en mm
			B	C	A
G 100K1	30500-ZG0-813	1	57	12	245
G 100K2	30500-ZG0-W01	1	56	12	250
G 150	30560-887-T00	3	74	12	300
G 150K1	30500-883-R51	1	58	12	360
G 200	30560-883-015	3	75	12	340
G 200K1	30500-883-R51	1	58	12	360
GC 135	30500-ZL8-004	1	58	9	150
GC 160					
GX 22	30500-ZM3-003	1	33	8	230
GX 31					
GX 25	30500-Z0H-003	1	35	6	29
GXH 50	30500-ZM7-004	1	30	9	120
GX 100 STD	30500-Z0D-003	1	62	6	110
GX 100 TAMP	30500-Z0D-V01	1	60,5	6	115
GX 120K1	30500-ZE1-043	2	58	12	200
GX 160K1					
GX 200	30500-ZF6-W02	2	68	12	250
GX 240K1					
GX 270					
GX 340K1					
GX 390K1					
GX 360K1	30500-ZA0-701 (CYL. 1 + CYL. 2)	5	72	15	250/310
GX 640	30500-ZG8-003 (CYL. 1 + CYL. 2)	3	-	-	175/200
GX 610	30500-ZJ1-023(CYL.1)/30550-ZJ1-023(CYL.2)	2	58	12	160/200
GX 620					
GX 610K1	30500-ZJ1-842(CYL.1)/30550-ZJ1-842(CYL.2)	2	58	18	180/200
GX 620K1					
GX 670					
GV 100K1	30500-ZG1-U10	1	56	12	200
GV 100K2	30500-ZL1-004		56	9	140
GCV 135	30500-ZL8-004	1	58	9	150
GCV 135E					
GCV 160A					
GCV 160					
GCV 520	30500-Z0A-013(CYL.1)/30550-Z0A-013(CYL.2)	1	58	12	160/200
GCV 530					
GXV 50	30500-ZM7-004	1	30	9	120
GXV 120	30500-ZG9-M03	2	58	12	110
GXV 140	30500-ZG9-801	1	62	9	170
GXV160	30500-ZE7-043	2	58	12	120
GXV 160K1	30500-ZG9-801	2	62	9	170
GXV 270K1	30500-ZF5-003	2	68	12	210
GXV 340K1	30500-ZE9-L33	2	68	12	235
GXV 340K2					
GXV 390K1					
GXV 520					
GXV 530	30500-Z0A-013(CYL.1)/30550-Z0A-013(CYL.2)	1	58	12	160/200
GXV 610	30500-ZJ1-023(CYL.1)/30550-ZJ1-023(CYL.2)	2	58	12	160/200
GXV 620					
GXV 610K1	30500-ZJ1-842(CYL.1)/30550-ZJ1-842(CYL.2)	2	58	18	180/200
GXV 620K1					
GXV 670					

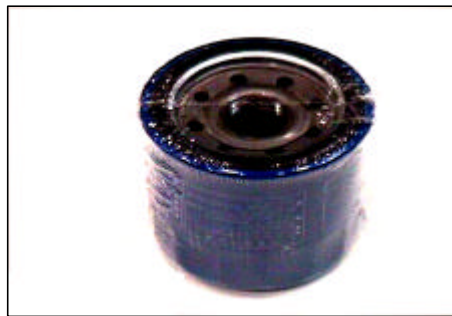


Codigo	Filtros aire	Prefiltro	Aplicable a	dimensiones			material/forma
				Largo	ancho	Alto	
1	17211-896-000		G100K1,G100K2	94	76	25	urethane, rectangular
2	17211-883-010		G150,G200	120	120	40	urethane, redondo
3	17211-883-W21	17218-883-W21	G150K1,G200K1	178	89	29	papel, rectangular
3	17211-ZL8-003		GC135,GC160 GCV135/160	133	115	21	papel, rectangular
4	17211-Z0H-000		GX25	76	83	20	urethane, +/- oval
5	17211-ZM3-000		GX22,GX31	72	72	20	urethane, redondo
1	17211-ZM7-000		GXH50,GXV50	89	89	12	urethane, cuadrado
3	17211-ZL8-003	17218-Z0D-000	GX100 STD, GX 100 TAMPER	133	115	21	papel, rectangular
6	17210-ZE0-505*	17218-ZE0-505	GX120K1	102	74	52	papel,oval(filt. exter.urethane)
6	17210-ZE1-505*	17218-ZE1-505	GX160K1,GX200	102	74	71	papel,oval(filt. exter.urethane)
6	17210-ZE2-505*	17218-ZE2-505	GX240K1,GX270	155	121	40	papel,oval(filt. exter.urethane)
6	17210-ZE3-505*	17218-ZE3-505	GX340K1,GX390K1	112	97	92	papel,oval(filt. exter.urethane)
6	17210-ZA0-506	17218-ZA0-506	GX360K1	165	105	40	papel,oval(filt. exter.urethane)
7	06172-ZG8-L20	17218-ZG8-000	GX640	186	174	34	papel, rectangular
7	17010-ZJ1-000	17218-ZJ1-000	GX610,GX620,GXV610,GXV620	238	183	32	papel, rectangular
8	17210-ZJ1-842	17218-ZJ1-840	GX610K1, GX620K1, GX670, GXV610K1, GXV620K1, GXV670	225	167	30	papel, rectangular
9	17211-ZG1-700		GV100K1	130	75	25	urethane, +/-rectangular
9	17211-ZL1-000		GV100K2	120	70	25	urethane, +/-rectangular
8	17211-Z0A-003	17218-Z0A-000	GCV520,GCV530,GXV520,GXV530	215	120	22	papel, rectangular
6	17210-ZE6-505*	17218-ZE6-505	GXV120	190	62	50	papel,oval(filt. exter.urethane)
7	17211-ZG9-800	17218-ZG9-800	GXV140	137	61	25	papel, rectangular
6	17210-ZE7-505*	17218-ZE6-505	GXV160	190	63	45	papel,oval(filt. exter.urethane)
6	17211-ZE7-W03*	17218-ZE7-W02	GXV160K1	180	62	50	papel,oval(filt. exter.urethane)
6	17210-ZF5-505	17218-ZF5-505	GXV270K1,GXV340K1	124	60	87	papel, oval
6	17211-ZF5-V01	17218-ZF5-V00	GXV340K2,GXV390K1	124	60	87	papel, oval

* = FILTRO AIRE + FILTRO EXTERIOR



<u>filtro aceite</u>	<u>aplicable a</u>	<u>∅</u>	<u>alto</u>	<u>material</u>
15400-ZJ1-004	GXV340K2, GXV610, GXV610K1, GXV620, GXV620K1, GXV670, GX610, GX610K1, GX620, GX620K1, GX670	83	82	metal, cil.
15400-PFB-004	GCV520, GCV530, GXV520, GXV530	65	65	metal, cil.
15400-PFB-007	GX640	69	72	metal, cil..
15400-PLC-004	GXV340K1, GXV390	65	85	metal, cil.
15400-679-033	GX360K1	68	67	metal, cil.



<u>filtro gasolina</u>	<u>aplicable a</u>	<u>pequeño grande</u>		<u>altura</u>	<u>material</u>
		<u>∅</u>	<u>∅</u>		
16910-ZV4-015	GCV530, GC135, GC160, GXV520, GXV530	22	29	67	plástico
16910-GB2-005	GX100, GX120K1, GX160K1, GX200, GX240K1, GX270, GX360K1, GX390K1	23	30	53	plástico
16910-ZE8-015	GXV340K1, GXV340K2, GXV390K1, GXV610, GXV610K1, GXV620, GXV620K1, GXV670, GX360K1, GX610, GX610K1, GX620, GX620K1, GX670, G100K1, G100K2, GXV270K1	22	29	65	plástico
16910-ZG0-U02	G100K2	22	29	64	plástico

